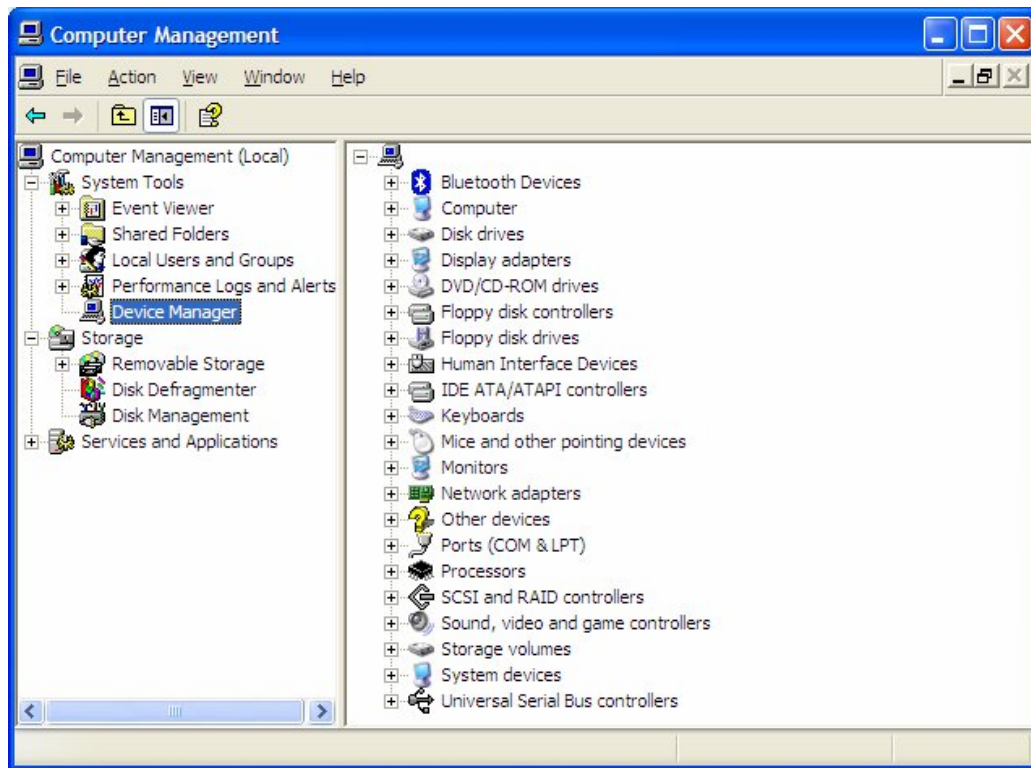


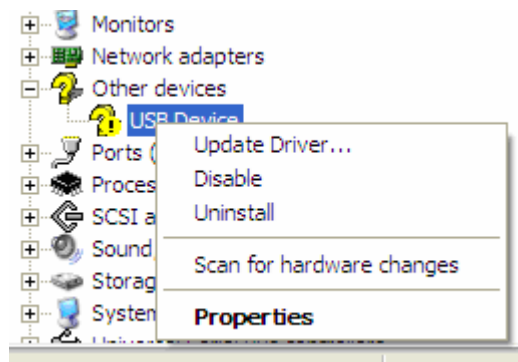
NXT Phantom Driver Troubleshooting

If you are having problems communicating with your NXT via USB then you probably have a Phantom driver installation problem.

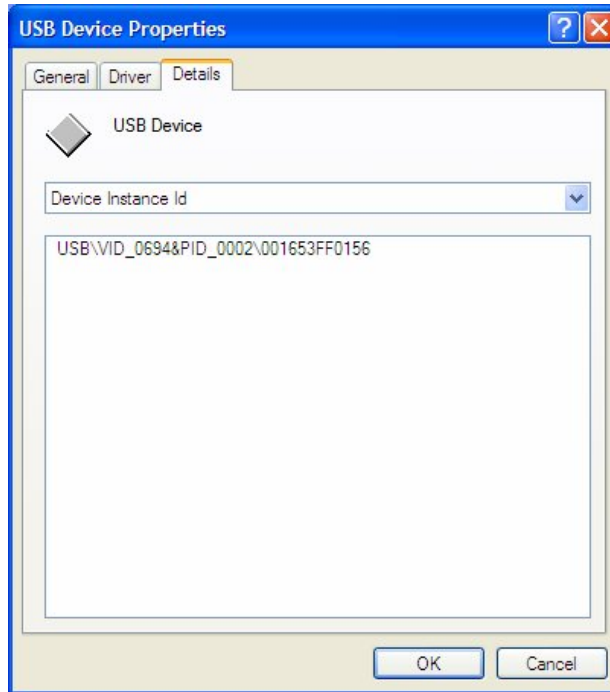
Check whether your NXT is properly recognized by your system by right-clicking on the My Computer icon on your desktop and then selecting Manage from the popup menu. Once the Computer Management window is displayed click on Device Manager to view your devices. You can also get to the Device Manager view by opening the System Control Panel applet. From there click on the Hardware tab and then click the Device Manager button. You can also select Start|Run, type devmgmt.msc, and then click OK.



If properly configured, the NXT is listed under an item called LEGO Devices. If your NXT is plugged into a USB port and it is turned on then either you will see the LEGO Devices item or you will see an item called Other Devices. If you see an item in the tree labeled "Other Devices" expand it and right click on the USB Device listed beneath it. Select Properties.



You should see a dialog with three tabs. Select the Details tab.



If the VID and PID match the values shown above (0694 and 0002) then you are looking at your NXT's USB Device information and the NXT Phantom driver has not been correctly installed.

Download the MINDSTORMS NXT Driver v1.02 update from the LEGO.com MINDSTORMS Update page (<http://mindstorms.lego.com/Support/Updates/>).


A screenshot of a web browser showing the LEGO.com MINDSTORMS NXT Driver v1.02 update page. The browser address bar shows 'http://mindstorms.lego.com/Support/Updates/'. The page content includes a download button, system requirements for Windows and Mac, a description of the driver update, and a table with version and post date information.

Click on download to save the update to your hard drive. Unzip the downloaded archive including the folder structure and run MindstormsDynamicBlockUpdate.pkg.

System Requirements

Windows
Windows XP Service Pack 2 with LEGO MINDSTORMS NXT Software 1.0 or MINDSTORMS NXT Education Software 1.0

MAC
Mac OS X 10.3.9+ with LEGO MINDSTORMS NXT Software 1.0 or MINDSTORMS NXT Education Software 1.0

 **MINDSTORMS NXT Driver v1.02**

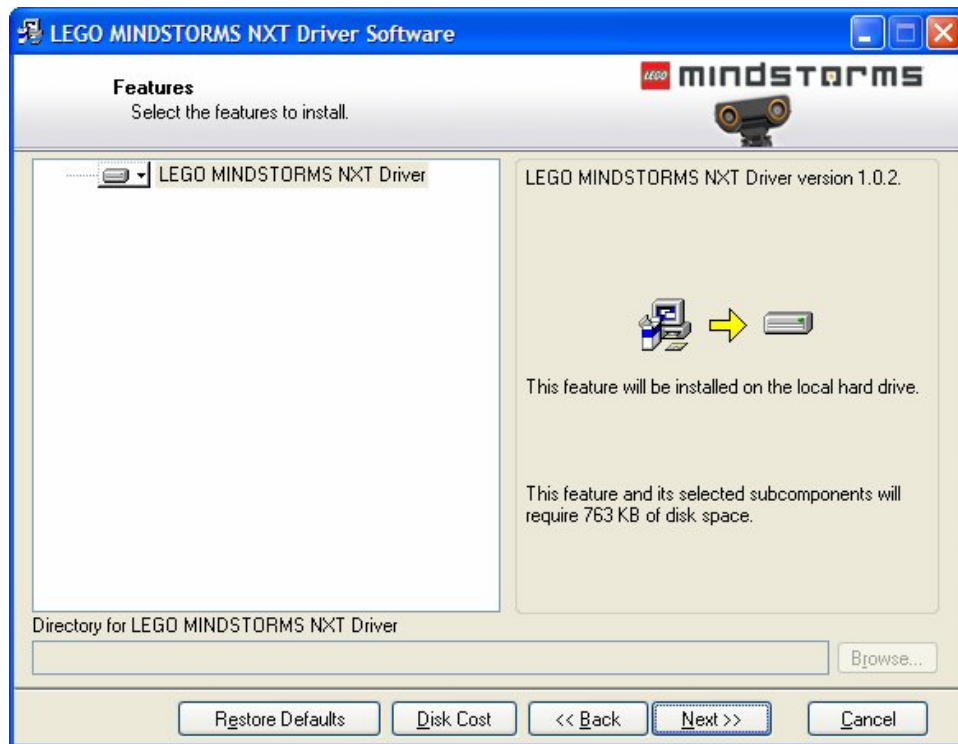
Description
This software updates the LEGO MINDSTORMS NXT driver and addresses an issue that prevents the firmware from being downloaded to the NXT on some occasions.

When you have installed the new driver and want to download new firmware to the NXT, please initialize the NXT brick before you start downloading the firmware. **If your NXT is clicking when you insert batteries**, push the hardware reset button for five seconds before you insert the USB cable. This will ensure that the brick initializes correctly for the firmware download. The hardware reset button is located within the LEGO Technic hole below the USB connector on the NXT brick. **If your NXT brick is not clicking when you insert batteries** just go through the normal firmware download process as described within the manual when the new driver is installed.

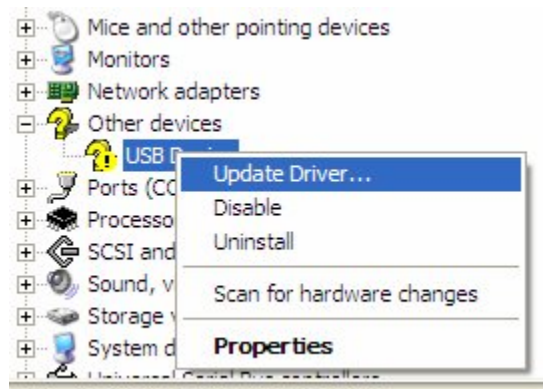
Version	Post Date	PC	MAC
1.02	26/07/2006	7.12MB	351KB

Instructions
Click on the download to save the patch to your harddrive. Unzip the downloaded archive and run Setup.exe

Save the zip to a known location on your PC and then extract the zip to a temporary directory. Execute "Setup.exe" to run the installer.



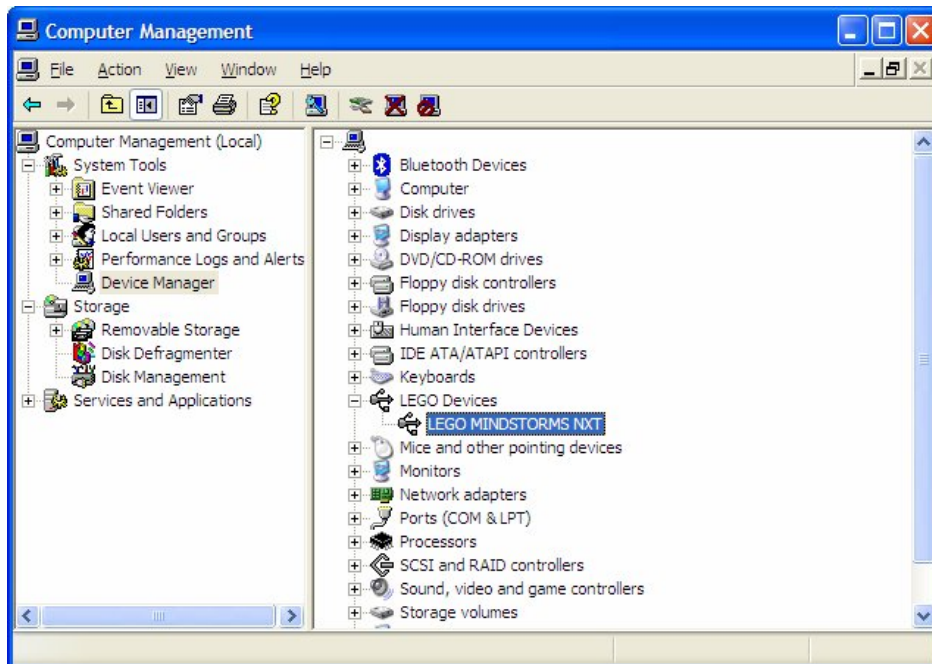
After you have finished installing the Phantom driver software, bring up the device manager window again. Right-click on the USB Device with the yellow question mark as before. Select "Update Driver..."



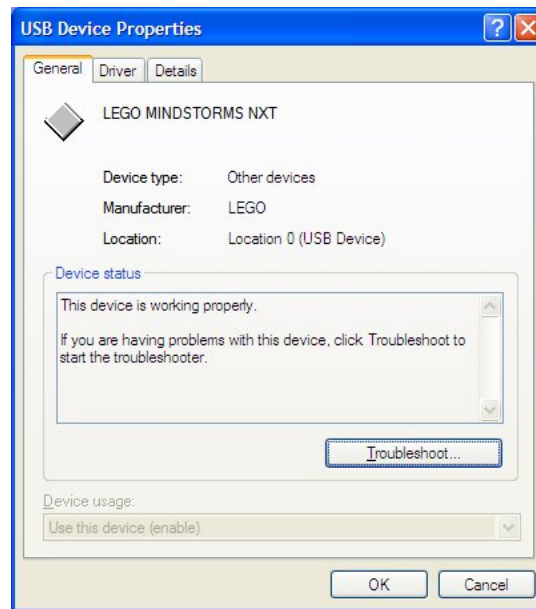
Select "No, not this time" and click Next.



Accept the defaults on the next page and click Next again. The wizard should automatically recognize the newly installed Fantom driver software and select it. Keep clicking Next or Finish until the wizard completes. After the wizard completes your device manager page should automatically replace the unknown USB Device with a LEGO Devices item containing a LEGO MINDSTORMS NXT device.



With the LEGO MINDSTORMS NXT device selected bring up the Properties either via the right-click menu or by double clicking on the item.



Switch to the Driver tab and click the Driver Details button to confirm that the driver is properly installed.



Now you should be ready to connect to your NXT using any software which uses USB and the Phantom drivers.